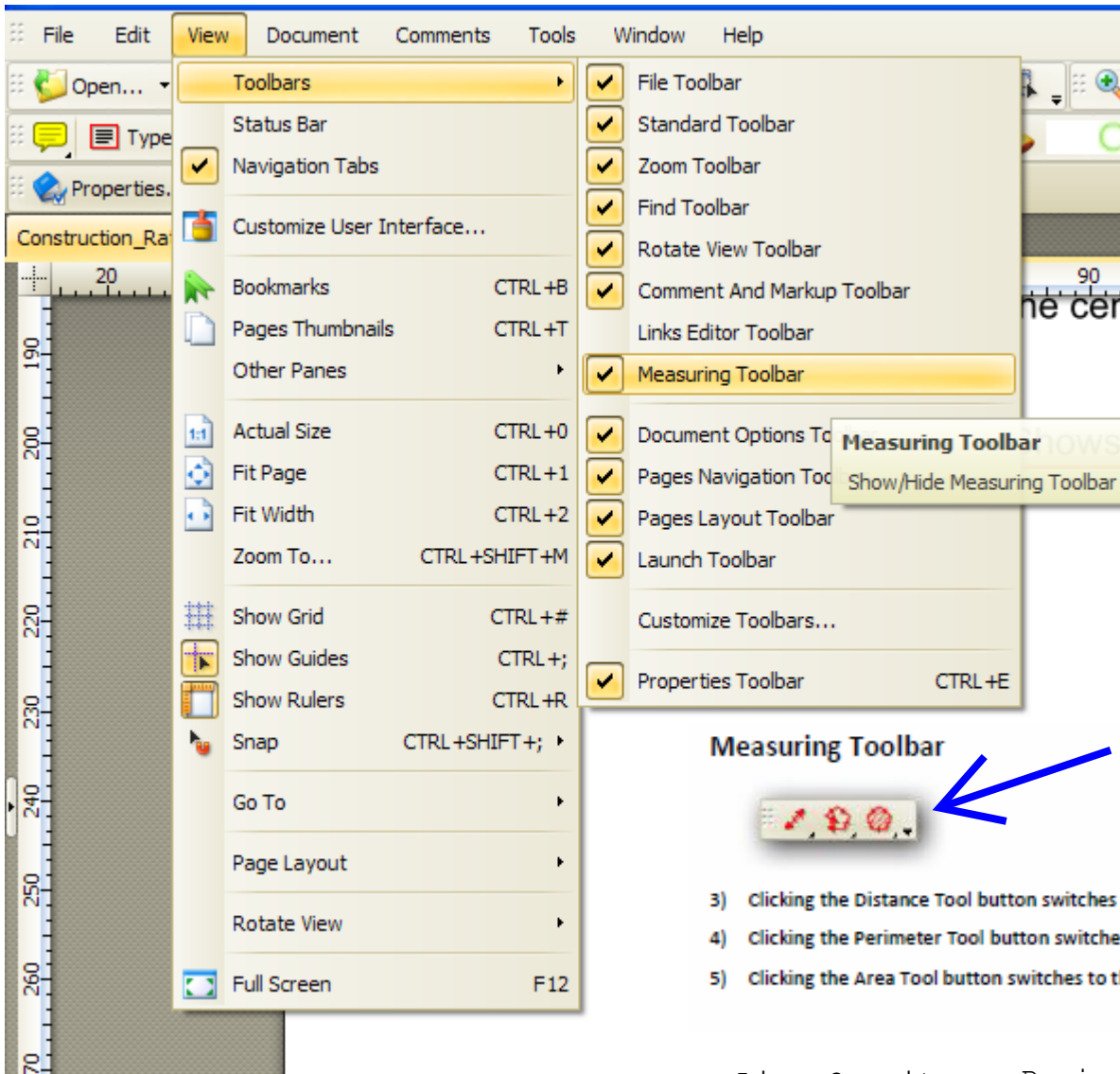


## The Measurement Toolbars Menu

The Toolbars submenu selects or deselects the following toolbars, below shows you how to display the Measuring Toolbar:

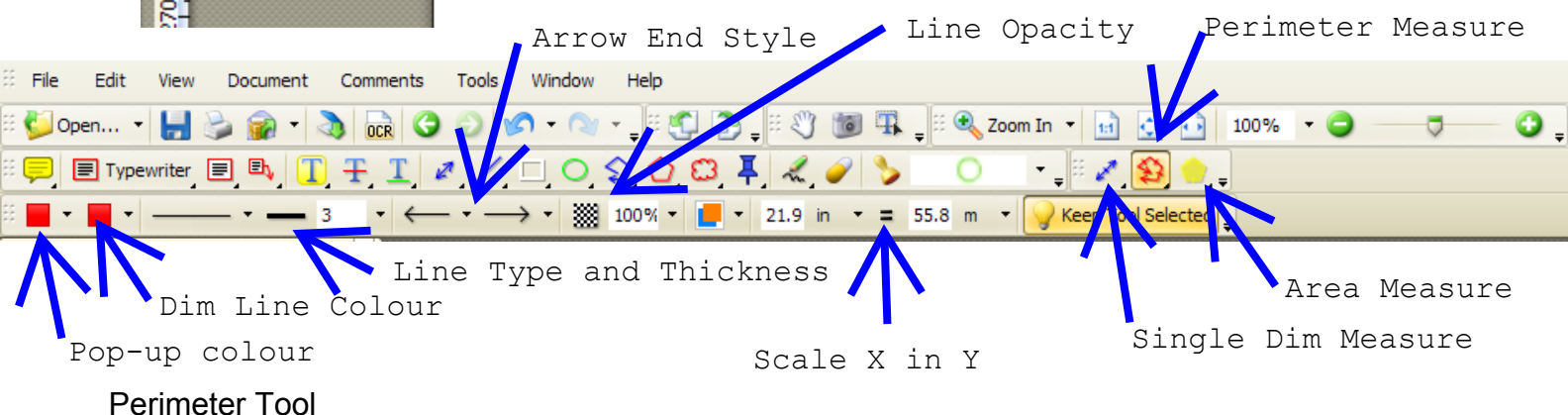


### Measuring Toolbar



As it looks on the toolbar, below

- 3) Clicking the Distance Tool button switches to the [Distance Tool](#).
- 4) Clicking the Perimeter Tool button switches to the [Perimeter Tool](#).
- 5) Clicking the Area Tool button switches to the [Area Tool](#).



Perimeter tool allows you to measure a set of distances between multiple points.

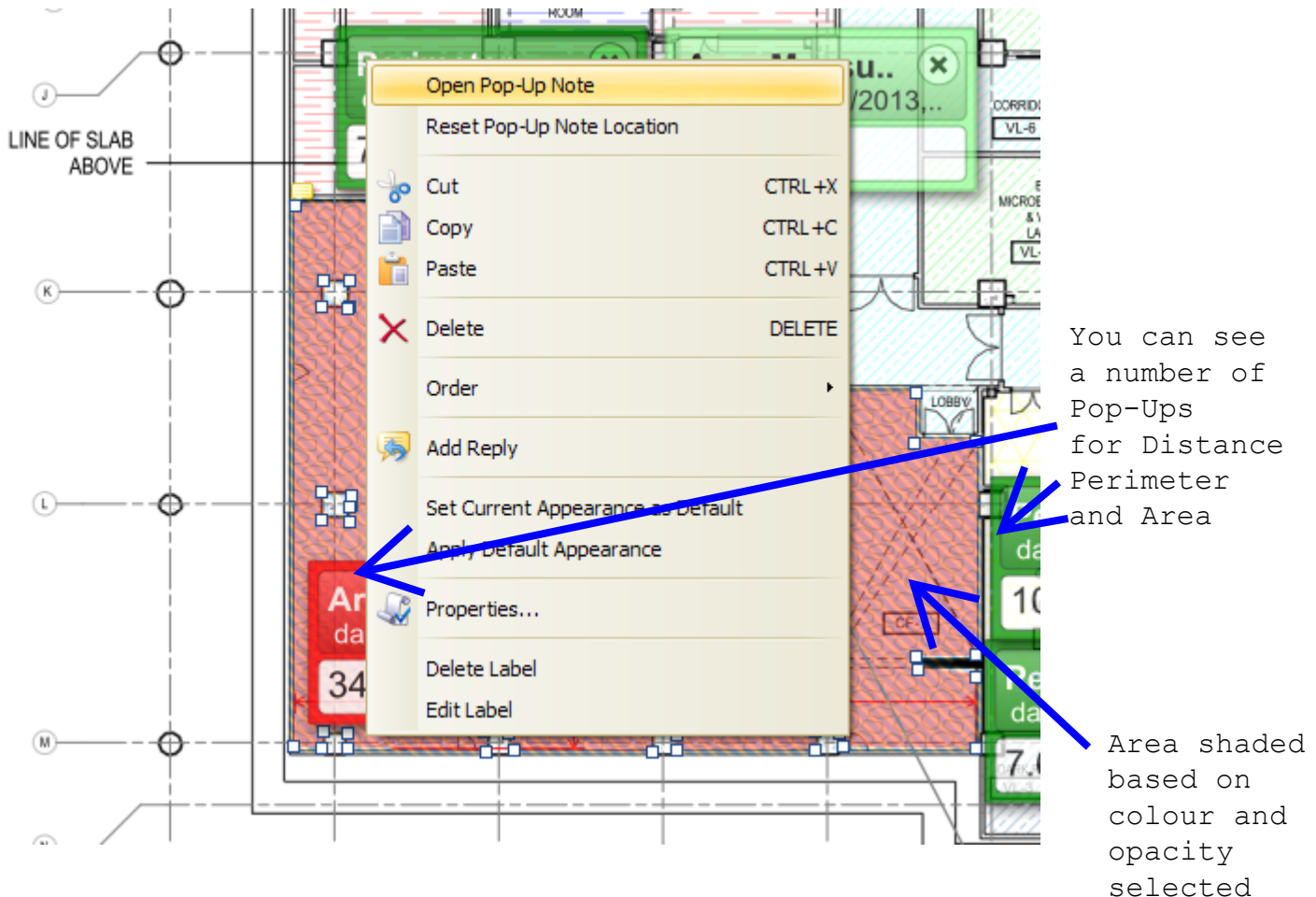
To measure the distance between multiple points, click the Perimeter tool markup button and a small cross-hair cursor appears. Select a starting point and click-and-drag the cursor to the next point. When you get there, click again to start a new segment that is automatically connected to the first. Repeat until you reach your stopping point. The measurements appear in the tool dialog box in the process of dragging the cursor.

After you click the last point, right-click to bring up a menu with two choices:

Cancel cancels and erases the Dimension Polyline.

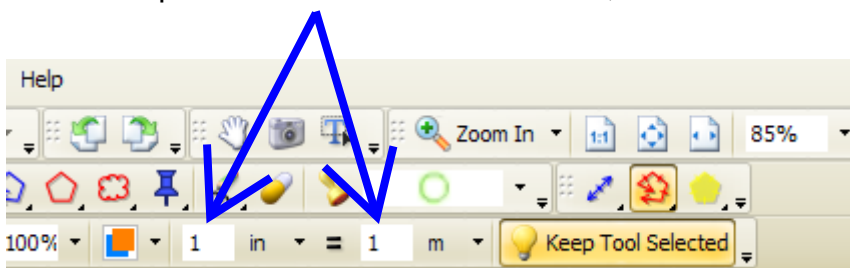
Complete completes the Dimension Polyline.

The tool dialog box reflects the final measurements of the perimeter and scale ratio of the Dimension line. After you complete the line dimension, you may add a pop-up note to display the measurement, by right clicking the Dim Line and selecting to 'Open Pop-Up Note'.



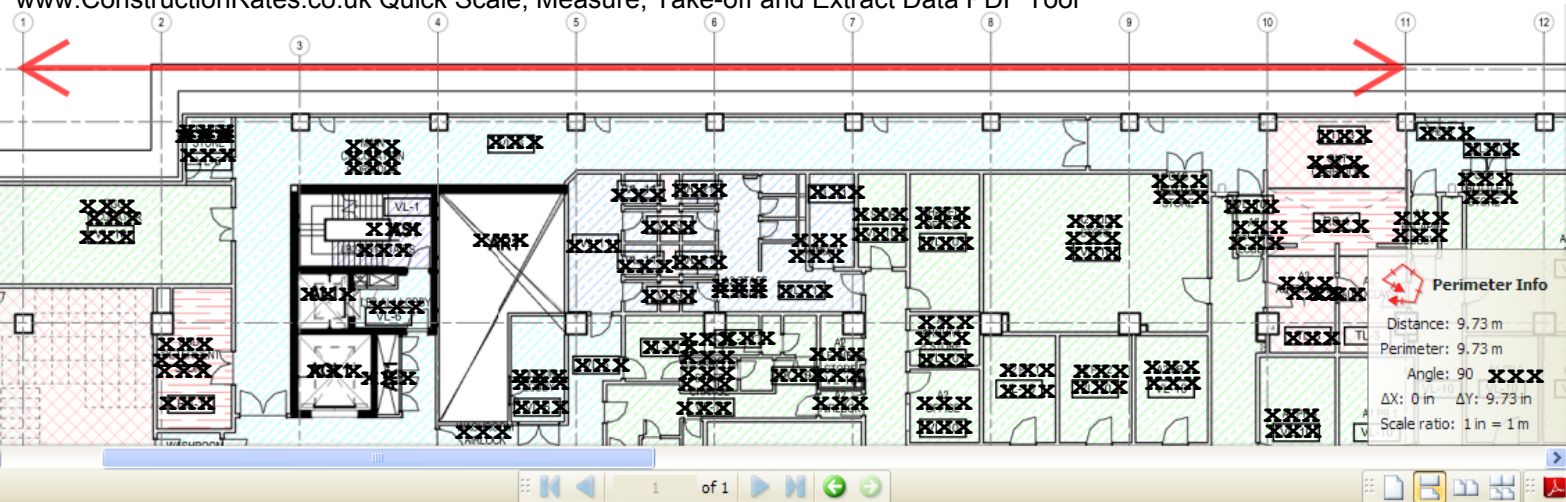
### Example of Setting the Measurement Scale

To set a scale for measuring from the pdf you should set the two scale inputs to 1 and 1 as shown below;-

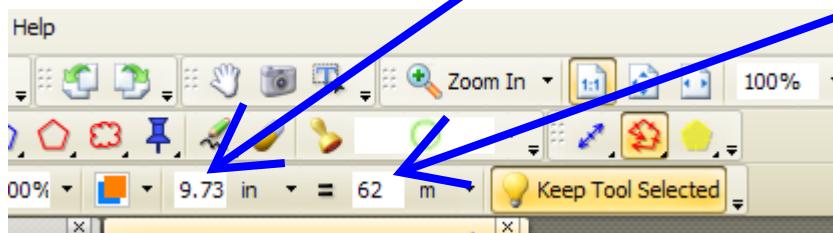


YOU MUST SET THE SCALE BEFORE YOU START MEASURING, Measured Mark-up cannot have the scale changed once complete is clicked

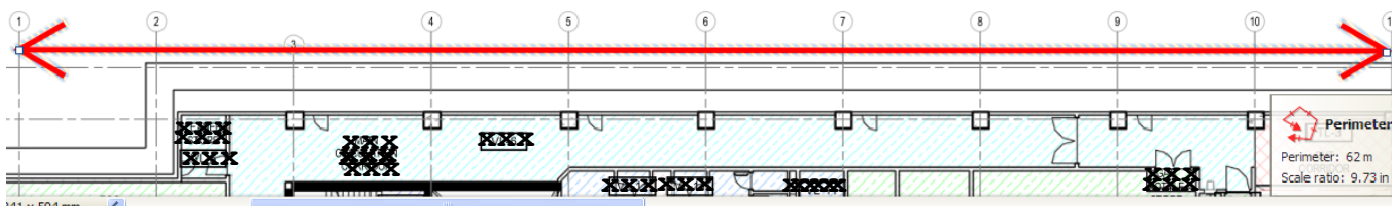
Then select a known distance on the drawing, the example below shows a distance selected from grid line 1 to 11, each grid is 6.20m giving 10 x 6.20m or 62m (note that the larger the distance the more accurate the measured results)  
the measure shows a pdf distance displayed of 9.73m at 90 Deg Angle (the angle should also represent a true line i.e. horizontal or vertical 0 or 90 Deg)



Then select the first scale input to 9.73m and the second scale input to 62m as shown below;-



This then allows you to measure directly on to the pdf drawing in the form of 'mark-up' 'comments' as shown below, the dim from grid 1 to 11 is now displayed at 62.00m;-



You need to set the scale for the 3 different measurement types at the derived scale as above, i.e. you need to set distance and area with the same scale e.g. 9.73 in 62.00m

if you make an error while clicking the measurement points  
you can press the "esc" key to start again, or click 'undo' once complete

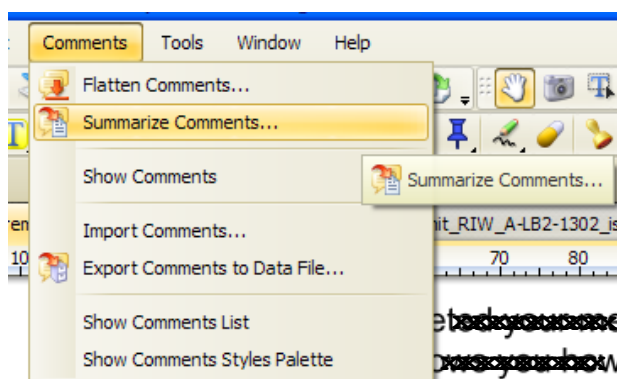
When you have finished the measurement for each dimension you need to right click and press the 'Complete' option shown to the left.



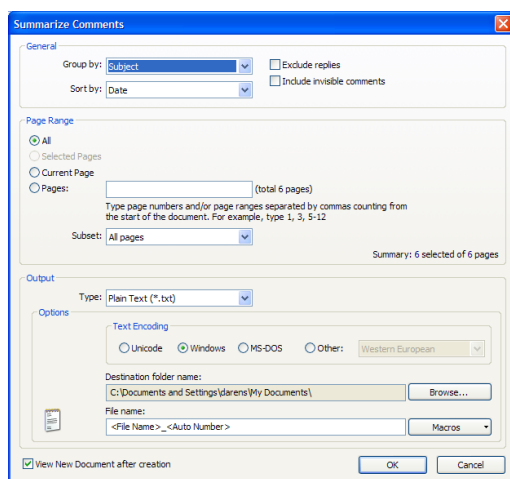
This will allow you to continue measuring other locations or complete your measure.

By double clicking your mark-up dim once complete it will open a Pop-Up note automatically

Once you have completed your measure you need to get your measurements in to a useable for, the example below shows you how to export them in to an Excel spread sheet.

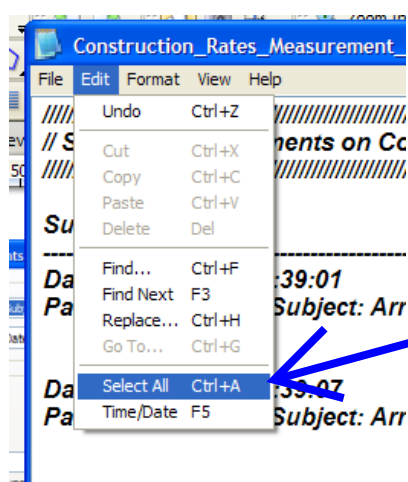


When you have measured your last dimension and your measure is complete, you need to select Comments, then Summerize Comments.. as shown to the left;-



When you click 'Summerize Comments..' the item shown to the left will appear. You can make changes to this as you require, but there is no real need for getting the dims.

So when you click 'OK' it will open the Output Type shown on the left, which is a text document.

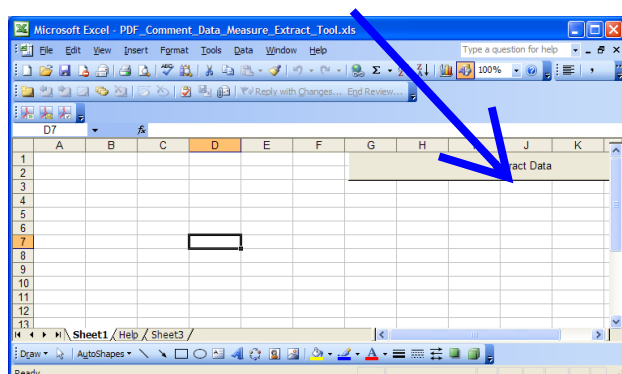


Once the text document is displayed, click 'Edit' and 'Select All'

Once all the Text is Selected then click 'Edit' and 'Copy'

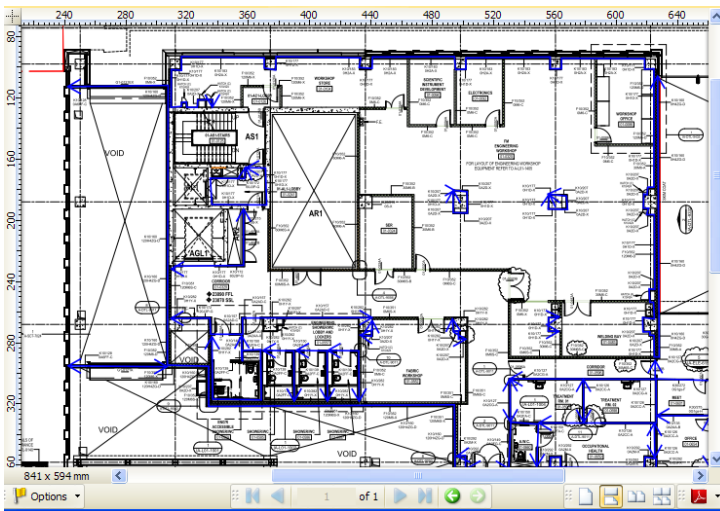
Now you can use the Construction Rates "PDF\_Comment\_Data\_Measure\_Extract\_Tool.xls"

To do this you simply Open the File "PDF\_Comment\_Data\_Measure\_Extract\_Tool.xls" and press the button 'Extract Data' as shown below;-





The example below shows a measure of plasterboard to walls (blue mark-up) and the measured data extracted using the procedure described above:-



Plasterboard measure shown in Blue

The blue mark-up measure took about 5 minutes to complete and extract the dims

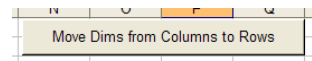
	A	B	C	D	E	F	G	H	I	J
1	1									
2	1	59.62								
3	1	26.6								
4	1	35.92								
5	1	3.62								
6	1	9.33								
7	1	6.42								
8	1	86.8								
9	1	11.92								
10	1	8.51								
11	1	15.19								
12	1	14.11								
13	1	5.28								
14	1	5.28								
15	1	5.28								
16	1	2.14								
17	1	1.77								
18	1	4.32								
19	1	4.65								
20	1	2.24								
21	1	31.86								
22	1	2.64								
23	1	20.02								
24	1	2.8								
25	1	2.8								
26	1	2.22								
27	1	10.46								
28	1	3.25								
29										
30										

Dimension data extracted using the Construction Rates

"PDF\_Comment\_Data\_Measure\_Extract\_Tool.xls"

This data can then be used with the other Construction Rates, take-off, abstract, billing, specification and price tools in order to build-up your, estimate, valuation, variation and or CVR (or the like)

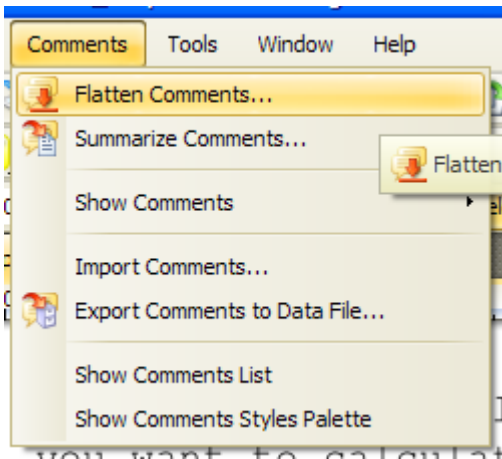
Note you can click the "Move Dims from Columns to Rows" button to use it in the "Dims Abstract Spec Rate & Billing" program (available seperately)



The same method applies to distance, perimeter or plan area measures. If you want to calculate the area of say walls, then you would use the perimeter measure, extract the dims as shown above and use the girth sum linear measure and multiply it by the height of the wall, simple.

You should also remember that you can use all types of mark-up and comments to label and annotate your take-offs as you progress them for future reference. This includes printing and saving to pdf documents as you proceed.

If you want to measure multiple elements on one mark-up, then you need to 'flatten' your previous 'mark-up' (after you have extracted the dims) i.e. if you measured plasterboard walls and then you want to measure plasterboard ceilings on the same record drawing, then this is where you would want to flatten the previous comment data as shown below:-



By pressing 'Flatten Comments..' this will ask you for confirmation that you will lose the previous data. However, the mark-up lines and displayed Pop-Ups will still be displayed, but your new measure will be capable of being extracted as before.

If you want to keep the detailed measured data of the walls before you measure the ceilings then you can simply "Save As" using a differing file name i.e. 'project\_name\_pd-wall.pdf'

This is a very quick and powerful tool especially if you are combining it with our other products, see our other products and see how we can help you work more productively...